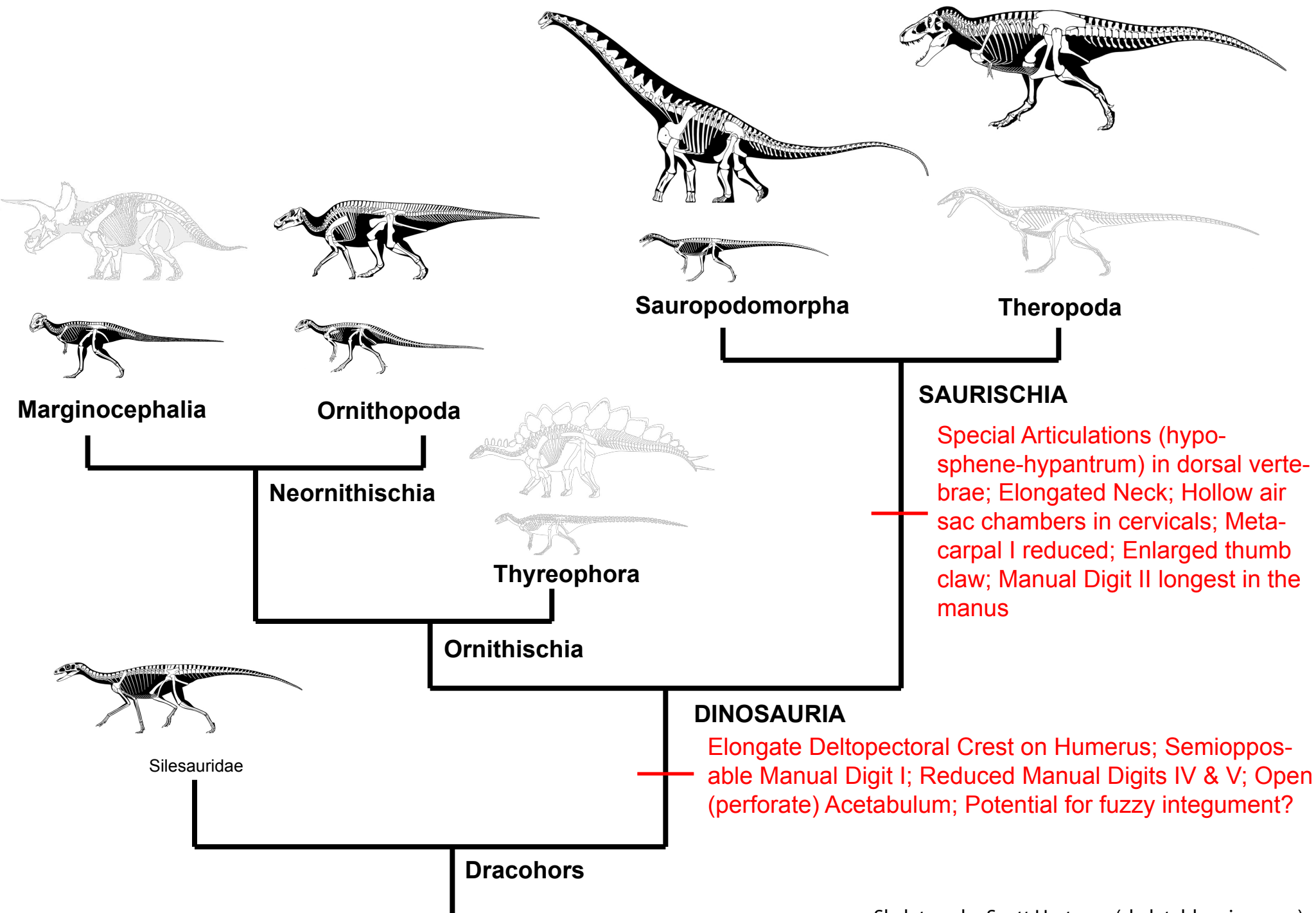


# DINOSAURIA



## SAURISCHIA

Special Articulations (hypo-sphene-hypantrum) in dorsal vertebrae; Elongated Neck; Hollow air sac chambers in cervicals; Metacarpal I reduced; Enlarged thumb claw; Manual Digit II longest in the manus

## DINOSAURIA

Elongate Deltopectoral Crest on Humerus; Semiopposable Manual Digit I; Reduced Manual Digits IV & V; Open (perforate) Acetabulum; Potential for fuzzy integument?