



# A+F Structural Consultants

Yannis G. Shoemaker

College Park Scholars – Science & Global Change Program

Civil Engineering

[yshoemak@umd.edu](mailto:yshoemak@umd.edu)

CPSG230

College Park Scholars Academic Showcase, May 5, 2023



## Introduction

Located in Northwest D.C, this group has reviewed major local projects such as Audi Field and Calvin Coolidge HS. My role was to shadow one of their professional engineers.

## Methods:

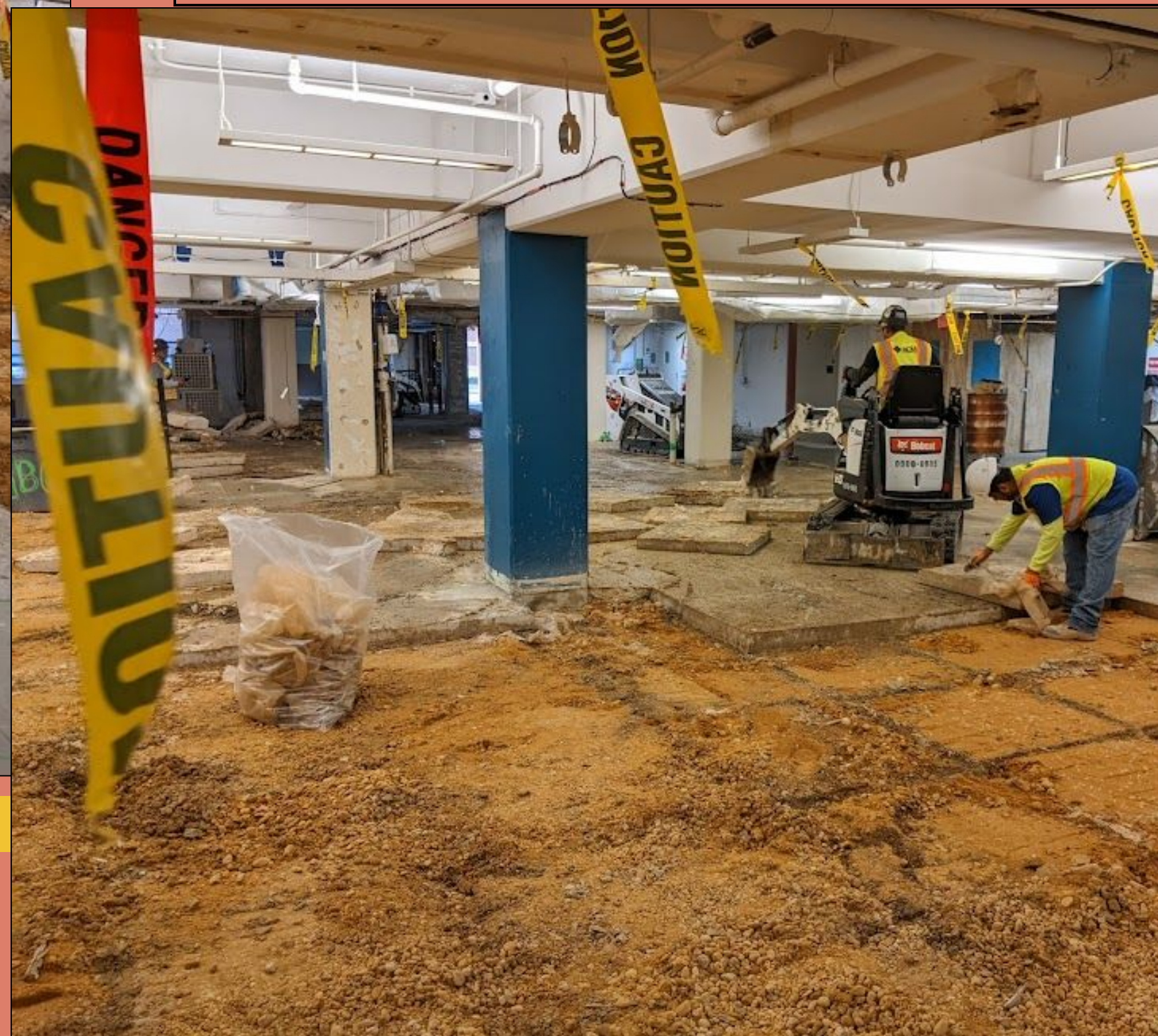
I took photographs of the excavated support system in Georgetown Healey Family Student Center (below) and sent them to the engineer. Also, I learned how to use Revit, a 3D-modeling system that helps verify plans.

## Results:

Sitting through two of the firm's weekly meetings to discuss projects, I was able to participate in a couple sign-offs. Each month, a number of contractors will (upon consulting A+F) be able to submit their architectural plans to a review process with the high hope of being granted access to operate.



1/5/23: With Edgardo (left) and the foreman (center) at HFSC



## Site Information:

A+F Engineers

1112 16th St NW UNIT 920, Washington, DC 20036

*“Providing quality designs since 2007 that maintain simplicity and efficiency, preserve architectural aesthetics, and facilitate construction.”*

<http://af-engineers.com/>

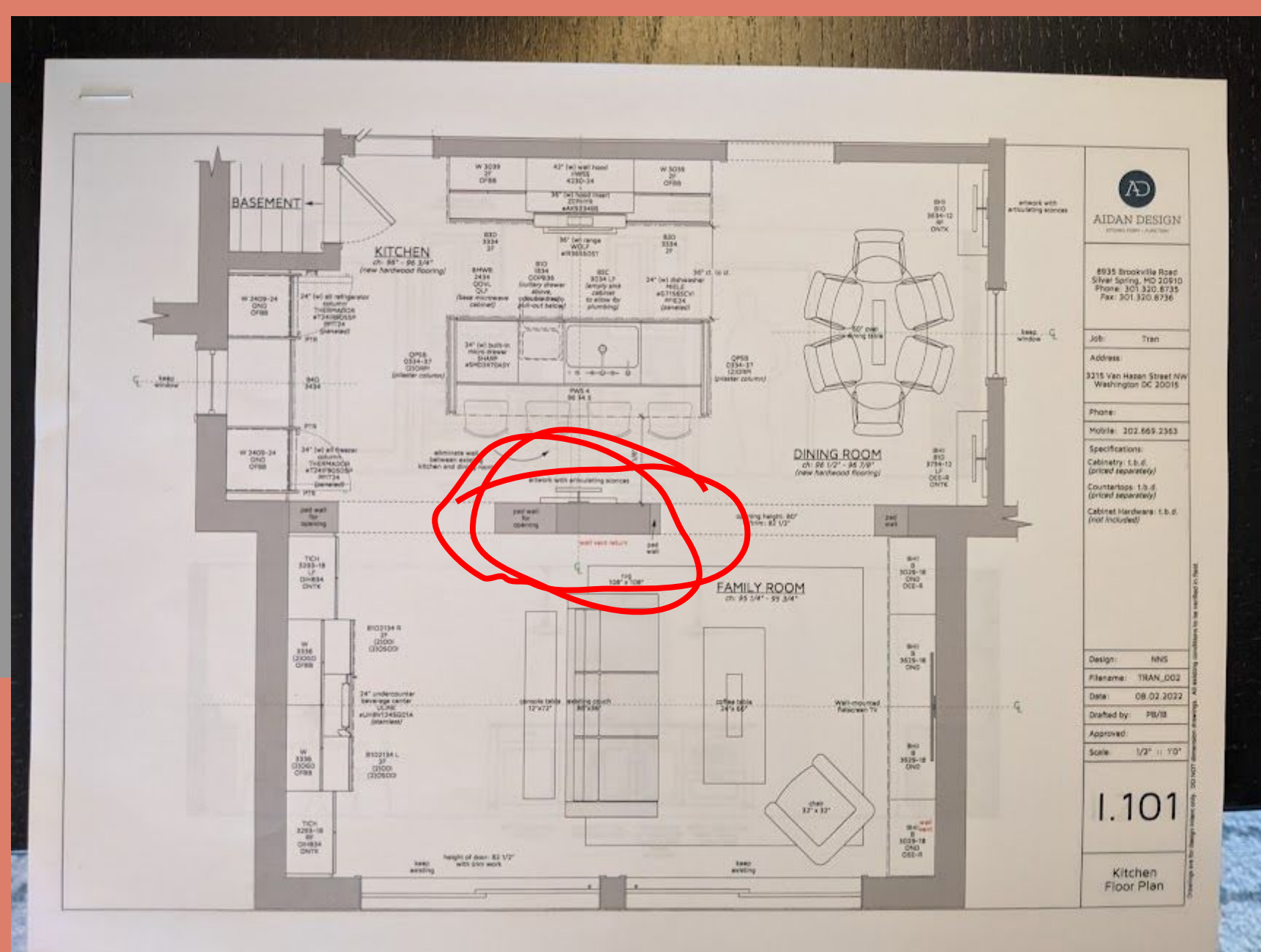
[contact@af-engineers.com](mailto:contact@af-engineers.com)

## Discussion:

With the approach that Edgardo and his colleagues use, there is very little room for error because they meet every demolition or enhancement with proper diligence and tools. A perfect example of this is the column to be removed (below).

## Materials:

- Journal for note keeping
- Phone for its camera
- Stud-finder for structure analysis
- Revit software (enhanced TI-84)



## Acknowledgments:

Great thanks to Drs. Holtz & Merck, Mr. Frantzis, and Mrs. Anastasi

