

GEOLOGY 200 :
Earth's Furry

Sections 101,102,103

WHO ARE YOU?

As you enter the class take a few minutes to answer the following on a sheet of paper

1. Name (and nickname if you'd like to be called something else)
2. Major or possible Major
3. Class standing (freshman, sophomore, junior, senior)
4. What you would buy with 1 million dollars ?

WHO AM I ?

- ▶ Bachelors of Science in Geology from Tulane University
 - ▶ Minor in Physics
 - ▶ Experimental Sedimentology – Created labs
 - ▶ Varsity Swimmer – Roll wave !

- ▶ Graduate Student - UMD
 - ▶ Seismology with Dr. Lekic
 - ▶ Earth's Furry – Fall 2013
 - ▶ Physical Geology - Spring 2014

WHERE AM I ?

Erin Cunningham

Email: ecunnin2@umd.edu

Website: <http://erincunningham.weebly.com/teaching.html>

Office: GEOL 3106 Lab : 3111

Office Hours : Fridays 11:15-12:15 or by appointment




WHAT IS DISCUSSION ?

In Discussion we will be

- Talking about assigned readings – “discussing them”
- Doing some short lab assignments following class lectures
- Review for midterms
- Discuss your projects (I am also available outside of class for this)

EXPECTATIONS IN DISCUSSION

1. Be respectful of their peers
 2. Contact me if they are becoming frustrated or feel behind in the class
 3. Contribute to class discussions
 4. Come prepared for class with the required reading or assignment completed (of course there are exceptions on a case by case basis)
 5. Notify me if they are not able to attend a discussion section
 6. Work both collaboratively and individually
 7. Bring out computers or phones in class unless instructed
 8. No use of recording devices during discussion
- 

GRADING IN DISCUSSION

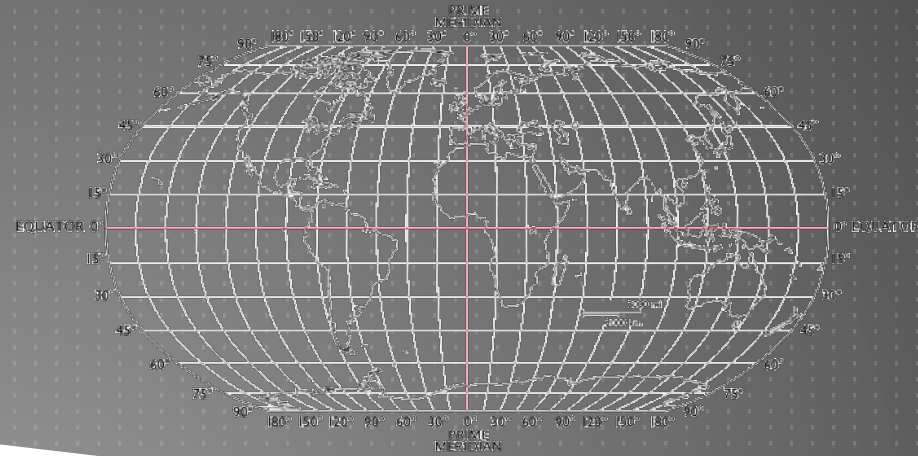
- ▶ So Assignments/Quizzes/Reading - 20 % of overall grade
- ▶ Each group of sections will be curved – so you will be curved within all of my sections this is for continuity of grading
- ▶ Reading Grade (2 pts)
 - ▶ Reading in discussion section will be worth 2 points- Discussion (worth 1 point for participation)
 - ▶ Short Answer (1 point)
- ▶ Same late penalty as class
- ▶ Lowest Reading or Assignment grade is dropped

ANY OTHER QUESTIONS?

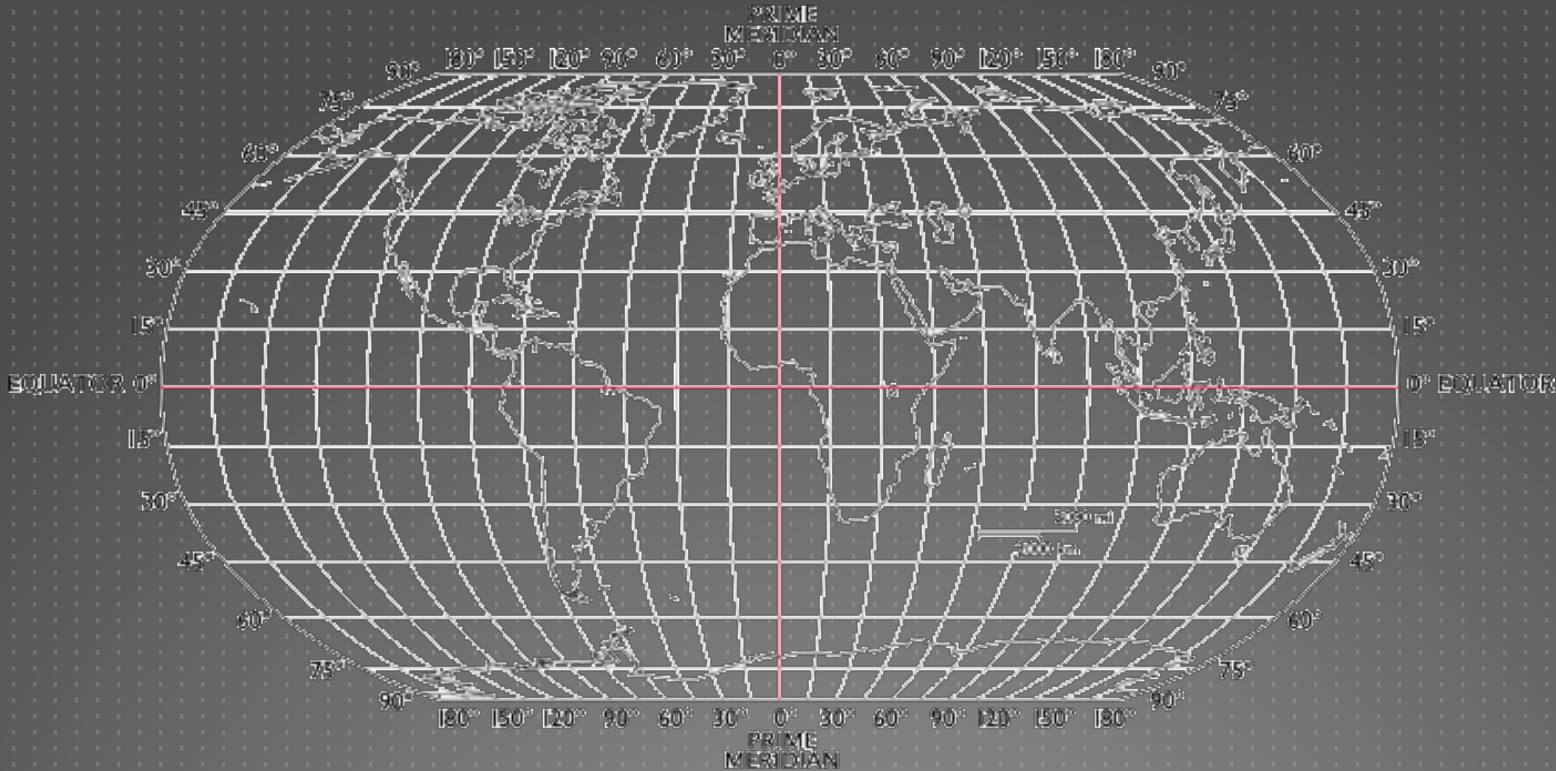


GEOGRAPHY

- ▶ How do we describe the location of places
- ▶ Latitude – N/S component parallel to equator going from 0 degrees at the equator to 90 degrees at the poles
- ▶ Longitude – E/W component parallel to the Prime Meridian



GEOGRAPHY



GEOGRAPHY

Locations

There will be a quiz on this next week.

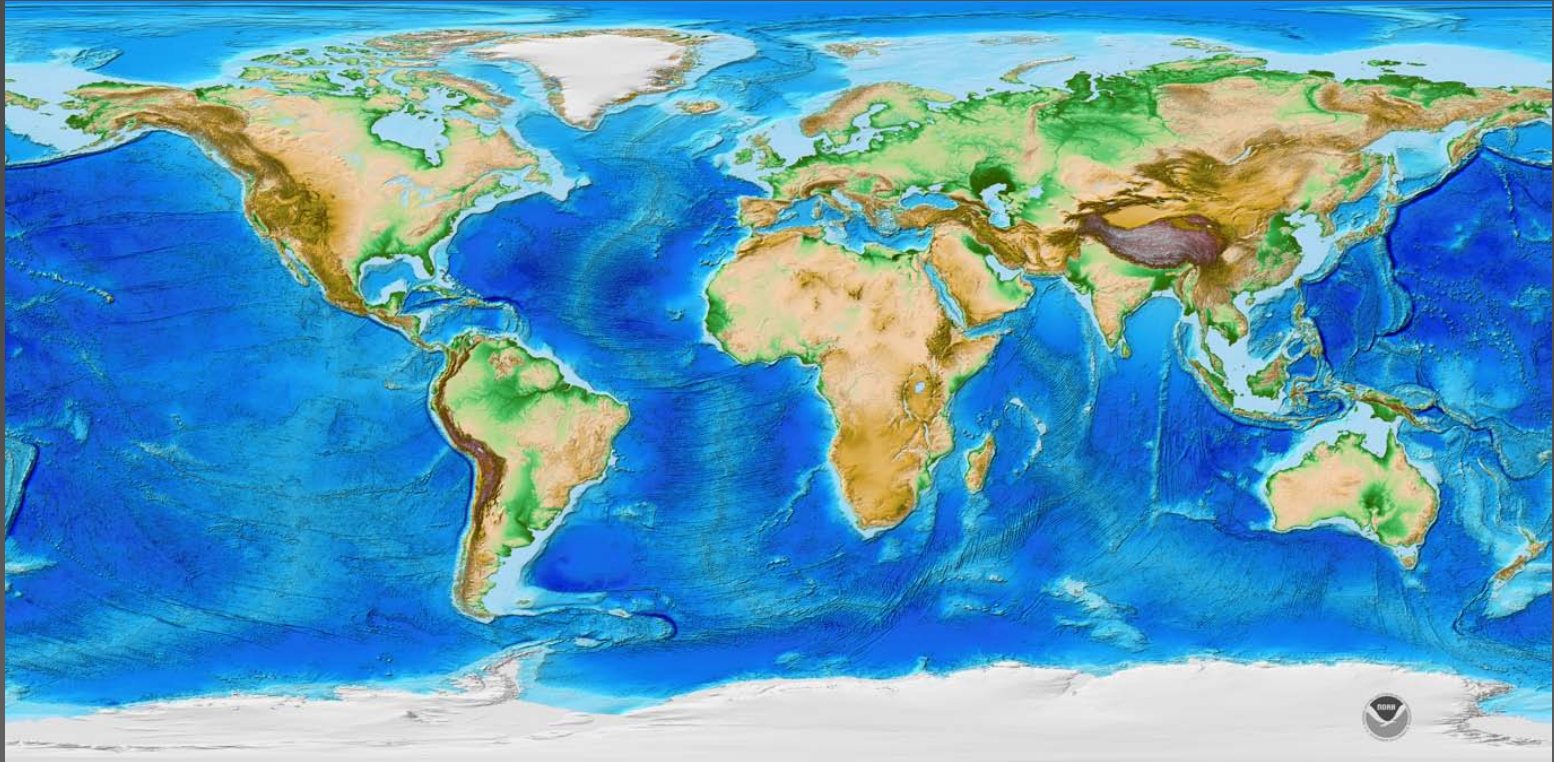
So lets practice

- Take a minute to take your map and write down any places you do know
- - Now, Get in groups or 3-4 and discuss with your peers and see how much more you know as a group
- Switch again
- Great , now lets finish and the map as a class so you can check your answers and prepare for the quiz next week



Be able to locate the following on a map. Also, review and understand how the geographic coordinate system (latitude/longitude) works.

1	Aegean Sea	11	Africa	21	Alaska	31	Aleutians	41	Anchorage	51	Antarctica
2	Arctic Ocean	12	Asia	22	Atlantic Ocean	32	Australia	42	Azores Island	52	Beijing
3	Bolivia	13	Borneo	23	Caribbean Sea	33	Chile	43	China	53	Colombia
4	Costa Rica	14	Ethiopia	24	Europe	34	Haiti	44	Hawaii	54	Himalayas
5	Iceland	15	Indonesia	25	Iran	35	Istanbul	45	Italy	55	Japan
6	Java	16	Kamchatka	26	Kerguelen	36	Los Angeles	46	Mariana Islands	56	Maryland
7	Mediterranean Sea	17	Memphis, TN	27	Mexico City	37	New Guinea	47	New Zealand	57	Nicaragua
8	North America	18	Oregon	28	Pacific Ocean	38	Portland	48	Portugal	58	Philippines
9	San Francisco	19	Seattle	29	Siberia	39	Sicily	49	South America	59	Sumatra
10	Taiwan	20	Tanzania	30	Tonga	40	Turkey	50	Vanuatu	60	Yellowstone

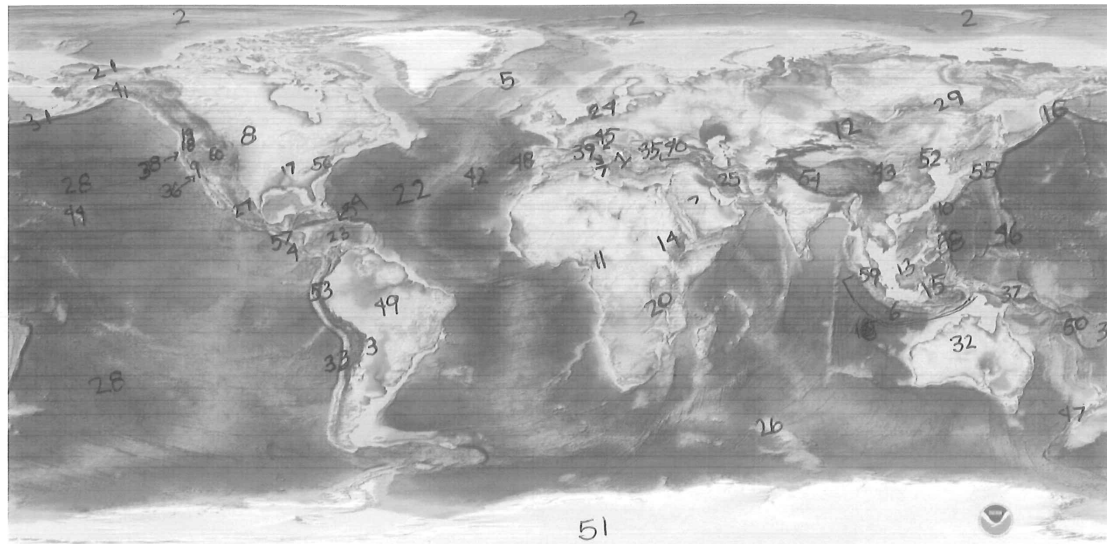


Be able to locate the following on a map. Also, review and understand how the geographic coordinate system (latitude/longitude) works.

Aegean Sea	Africa	Alaska	Aleutians	Anchorage	Antarctica
Arctic Ocean	Asia	Atlantic Ocean	Australia	Azores Island	Beijing
Bolivia	Borneo	Caribbean Sea	Chile	China	Colombia
Costa Rica	Ethiopia	Europe	Haiti	Hawaii	Himalayas
Iceland	Indonesia	Iran	Istanbul	Italy	Japan
Java	Kamchatka	Kerguelen	Los Angeles	Mariana Islands	Maryland
Mediterranean Sea	Memphis, TN	Mexico City	New Guinea	New Zealand	Nicaragua
North America	Oregon	Pacific Ocean	Portland	Portugal	Philippines
San Francisco	Seattle	Siberia	Sicily	South America	Sumatra
Taiwan	Tanzania	Tonga	Turkey	Vanuatu	Yellowstone

GEOGRAPHY ANSWERS

Answer Key



Be able to locate the following on a map. Also, review and understand how the geographic coordinate system (latitude/longitude) works.

1	Aegean Sea	11	Africa	21	Alaska	31	Aleutians	41	Anchorage	51	Antarctica
2	Arctic Ocean	12	Asia	22	Atlantic Ocean	32	Australia	42	Azores Island	52	Beijing
3	Bolivia	13	Borneo	23	Caribbean Sea	33	Chile	43	China	53	Colombia
4	Costa Rica	14	Ethiopia	24	Europe	34	Haiti	44	Hawaii	54	Himalayas
5	Iceland	15	Indonesia	25	Iran	35	Istanbul	45	Italy	55	Japan
6	Java	16	Kamchatka	26	Kerguelen	36	Los Angeles	46	Mariana Islands	56	Maryland
7	Mediterranean Sea	17	Memphis, TN	27	Mexico City	37	New Guinea	47	New Zealand	57	Nicaragua
8	North America	18	Oregon	28	Pacific Ocean	38	Portland	48	Portugal	58	Philippines
9	San Francisco	19	Seattle	29	Siberia	39	Sicily	49	South America	59	Sumatra
10	Taiwan	20	Tanzania	30	Tonga	40	Turkey	50	Vanuatu	60	Yellowstone