

WHO:

- Perissodactyl: “uneven finger” - horses, donkeys, zebras, tapirs, rhinoceros [4]
- Lagomorphs: rabbit-like, share MRCA with rodents [3]

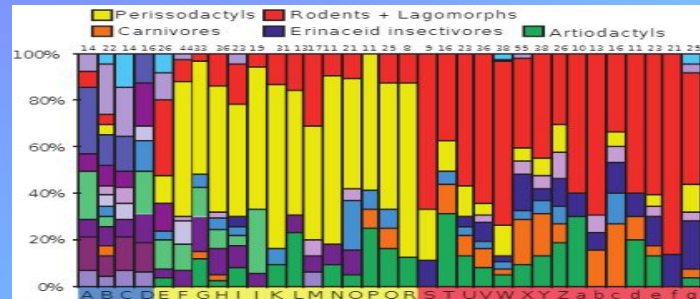
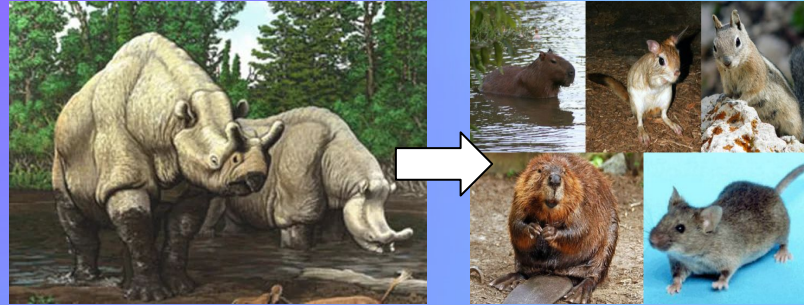
WHEN, WHERE, & MORE:

- E-O boundary: 33.9Ma [5]
- Europe & Mongolia [2]
- Most significant global biotic reorganization since end-Cretaceous extinction. [5]
- Faunal size changes correspond to tooth morphologies [2]

The Grande Coupure and the Mongolian Remodelling: Eocene-Oligocene Extinction

WHAT:

“Change from large-size perissodactyl-dominant fauna in forests under warm climate, to small rodent/lagomorph-dominant fauna in forest-steppe in dry climate at E-O boundary.” [2]



WHY & HOW:

- Shift from greenhouse to icehouse [4]
- Change from humid to arid conditions [1]
- Global temperature plummeted, first Antarctic ice sheets appeared. [3]
- Cold deep waters circulated Atlantic; Arctic waters isolated - global refrigeration [3]
- “Oxygen isotopes indicate global temperature drop of about 5-6°C in earliest Oligocene.” [3]
- Know
- Asian immigrants engendered competition in Europe, causing extinctions [1]

Isabel Knudson, Romeo Verdeflor,
Sam Wellington
GEOL 204 The Fossil Record
Spring 2019 Section 0101