

# Palaeomerycidae

Cindy Bridger, Lindsay Clifford, Caroline Harless,  
Kate Slaysman

# Palaeomerycidae

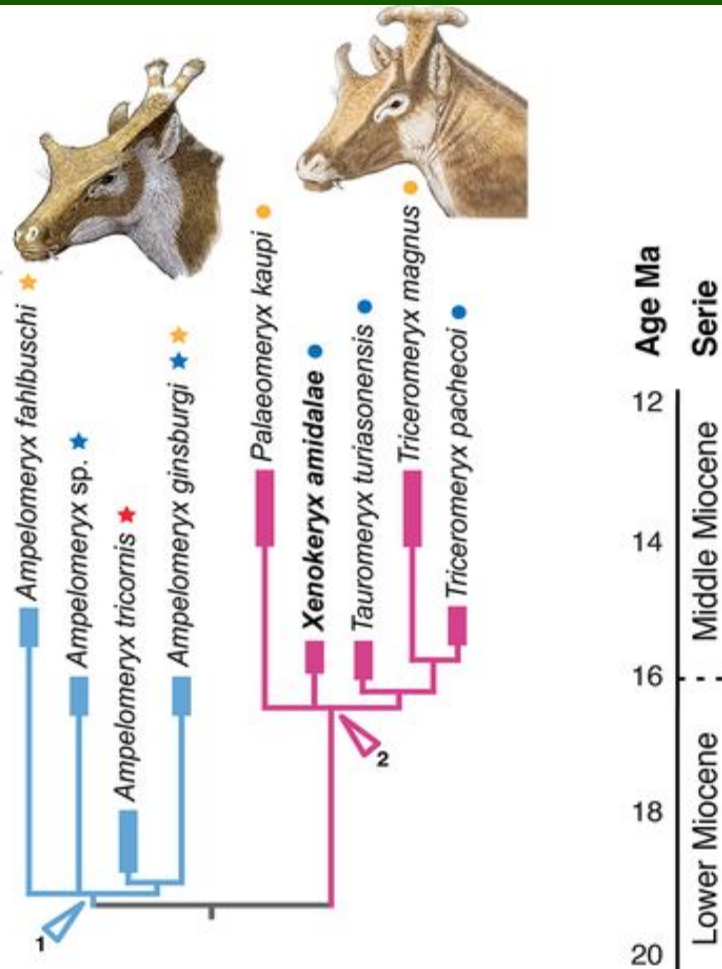
- Early- Late Miocene
- Found in sites in Spain and China\*
- Distinctions:
  - Ossicones
    - Pair of unbranched non-deciduous epiphyseal frontal appendages similar to those of giraffids; cylindrical to flattish in cross section
- Sexual dimorphism- ossicones - males had horns while females did not.





1. **Ampelomermyx** - clade: primitive dentition, sloped not-pneumatized flat ossicones and flat and variably sized occipital appendage.

2. **Triceromermyx** - clade: derived dentition, upright cylindrical pneumatized ossicones, great diversity of occipital appendages.



# Ampelomeryx

Where: Europe and China

When: Early Miocene - Late Miocene

Habitat: Open woodlands

Distinctive Features: Dentition and morphology of cranial appendages

Feeding/diet: ruminant herbivores; browsers



# Germanomeryx

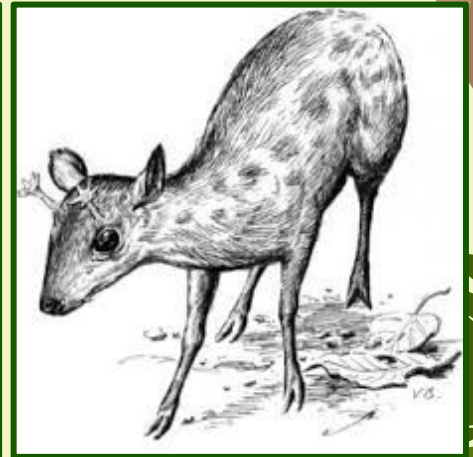
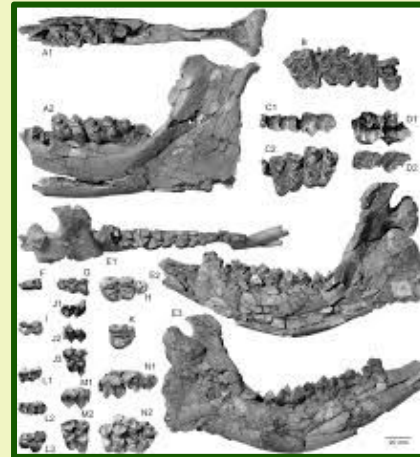
Where: Europe as a terrestrial, ground dwelling organism.

When: Langhian Stage during the Miocene Epoch.

Habitat: Canopy folivore

Distinctive Features: Larger upper canines with no p1. Short, rounded parieto-occipital appendages.

Feeding/diet: Herbivore, browsers.



# Triceromeryx

Where: Europe

When: The middle Miocene epoch, 16.9–16.0 Ma

Habitat: subtropical forests, open woodlands

Distinctive Features: Y-shaped occipital appendage with well-developed pedicle and cylindrical branches

Feeding/Diet: Leaves, Young branches and twigs, Fruits and possibly seeds, Shrubby vegetation



# Tauromeryx

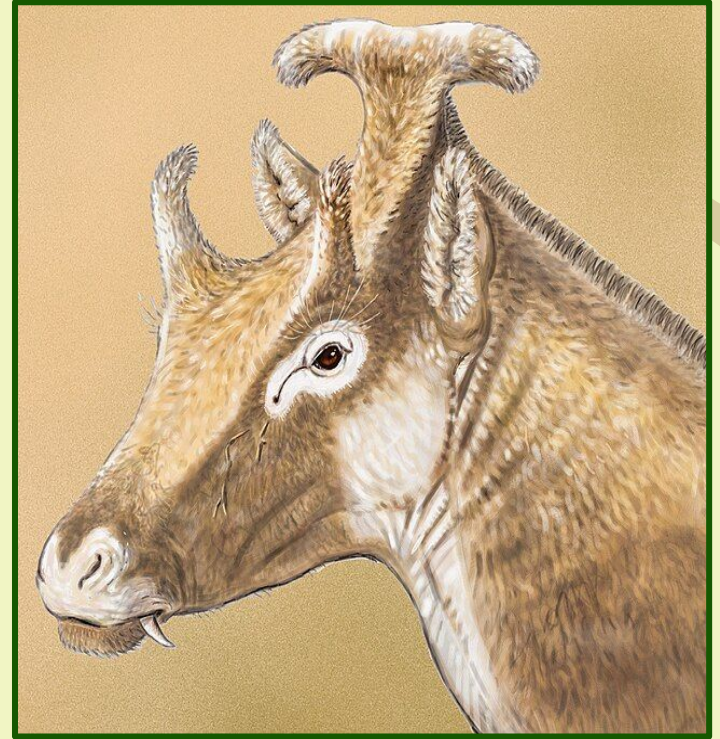
Where: North America

When: Late Miocene (~11 to 5 million years ago)

Habitat: Open woodlands and grasslands

Distinctive Features: Had two pairs of horns covered in skin, adapted for fast running across open landscapes

Feeding/Diet: Herbivore – ate grasses and low shrubs, roaming plant-eater



# Work Cited

Astibia, H. 2012. Les Palaeomerycidae (Artiodactyla) de Sansan. *Universidad del País Vasco* 203: 201–224. doi: 203:201-224.

Astibia, H., J. Morales, and S. Moya Sola. 1998. *Tauromeryx*, a new genus of Palaeomerycidae (Artiodactyla, Mammalia) from the Miocene of Tarazona de Aragon (Ebro Basin, Aragon, Spain). *Bulletin de la Société Géologique de France* 169: 471–477.

Myers, P., R. Espinosa, C.S. Parr, T. Jones, G.S. Hammond, and T.A. Dewey. 2025. The diversity of cheek teeth. *Animal Diversity Web*. [https://animaldiversity.org/collections/mammal\\_anatomy/tooth\\_diversity/](https://animaldiversity.org/collections/mammal_anatomy/tooth_diversity/)

PBDB. 2009. *Ampelomeryx*. The Paleobiology Database. [https://paleobiodb.org/classic/checkTaxonInfo?taxon\\_no=138939&is\\_real\\_user=1](https://paleobiodb.org/classic/checkTaxonInfo?taxon_no=138939&is_real_user=1)

PaleobioDB. 2025. PBDB Taxon. PaleobioDB. [https://paleobiodb.org/classic/checkTaxonInfo?taxon\\_no=499943&is\\_real\\_user=1](https://paleobiodb.org/classic/checkTaxonInfo?taxon_no=499943&is_real_user=1)

Sánchez, I., J. Cantalapiedra, M. Rios, V. Quiralte, and J. Morales. 2015. Systematics and evolution of the Miocene three-horned palaeomerycid ruminants (Mammalia, Cetartiodactyla). *PLOS ONE* 10: e0143034. doi: 10.1371/journal.pone.0143034.

Webb, S.D. 1973. *Pleistocene mammals of Florida*. University of Florida Press.

DeMiguel, D., B. Azanza, and J. Morales. 2015. Taphonomic comparison of bone accumulation by *Myotragus balearicus* and extant small mammal predators: Implications for the interpretation of fossil accumulations. *PLoS ONE* 10: e0143034. doi: 10.1371/journal.pone.0143034

Pickford, M. 2001. Africa's smallest giraffid: *Triceromeryx* from the early Miocene of Kenya. *Comptes Rendus de l'Académie des Sciences - Series IIA - Earth and Planetary Science* 333: 673-680. doi: 10.1016/S1251-8050(01)01668-3