

# Weigeltisauridae

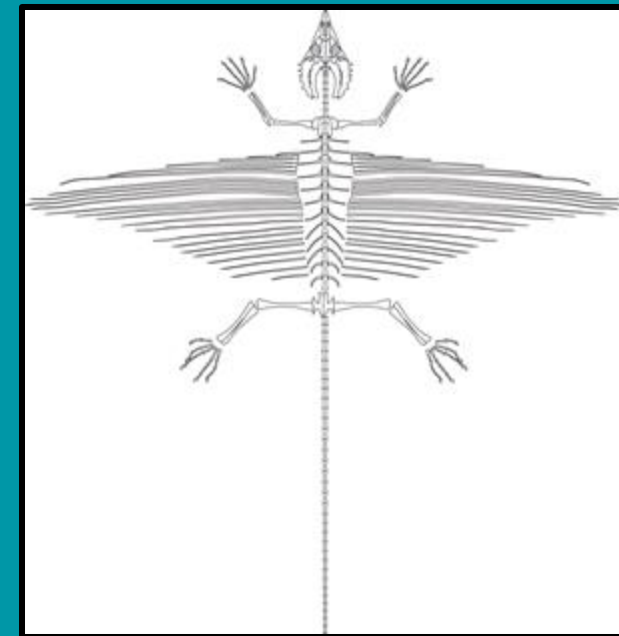
## What exactly is Weigeltisauridae?

- Clade of Gliding Reptiles
- Inhabited Earth during the Late Permian and Early Triassic (259.51 Ma - 251.90 Ma).



## Appearance

- A small reptile
- Heterodont teeth
- Patagium supported by long bony rods similar to ribs



## Geographic Distribution

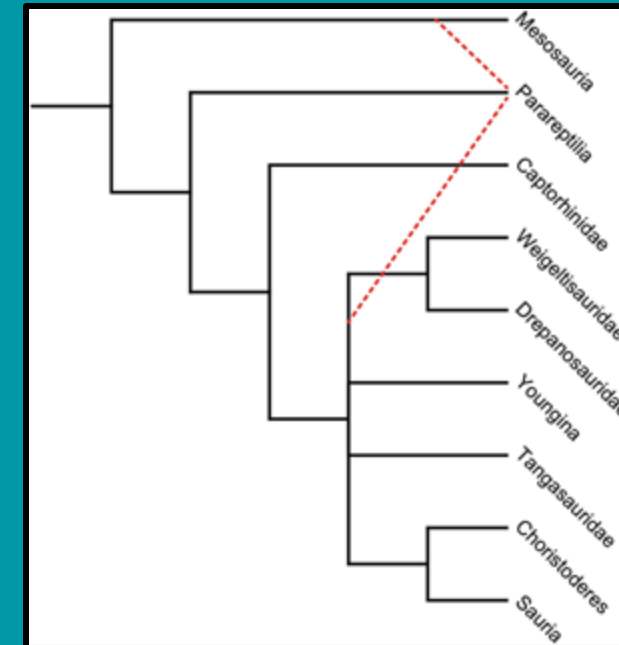
- Fossils of Weigeltisauridae have been found in Germany, Russia, Madagascar, and Great Britain



The skeleton of SMNK-PAL 2882 (*Weigeltisaurus jaekeli*). Scale bar equals 5 cm. Full-size DOI: 10.7717/peerj.11413/fig-2

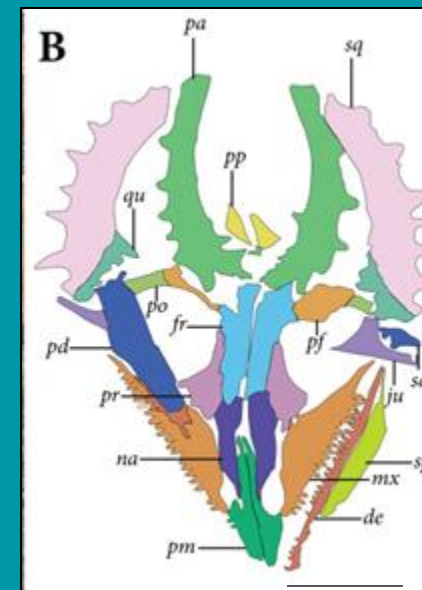
## Taxonomy

- Kingdom: Animalia
- Phylum: Chordata
- Class: Reptilia
- Clade: Neodiapsida



## Gliding Ability & Bone Structure

- Manipulated patagia
- Focus point: Cranial structure
- Lacked a large temporal fenestra
- Ungual Phalanges



Rahul Arora, William Derrick,  
Joshua Chavez  
GEOL 204 The Fossil Record  
Spring 2024 Section 0101