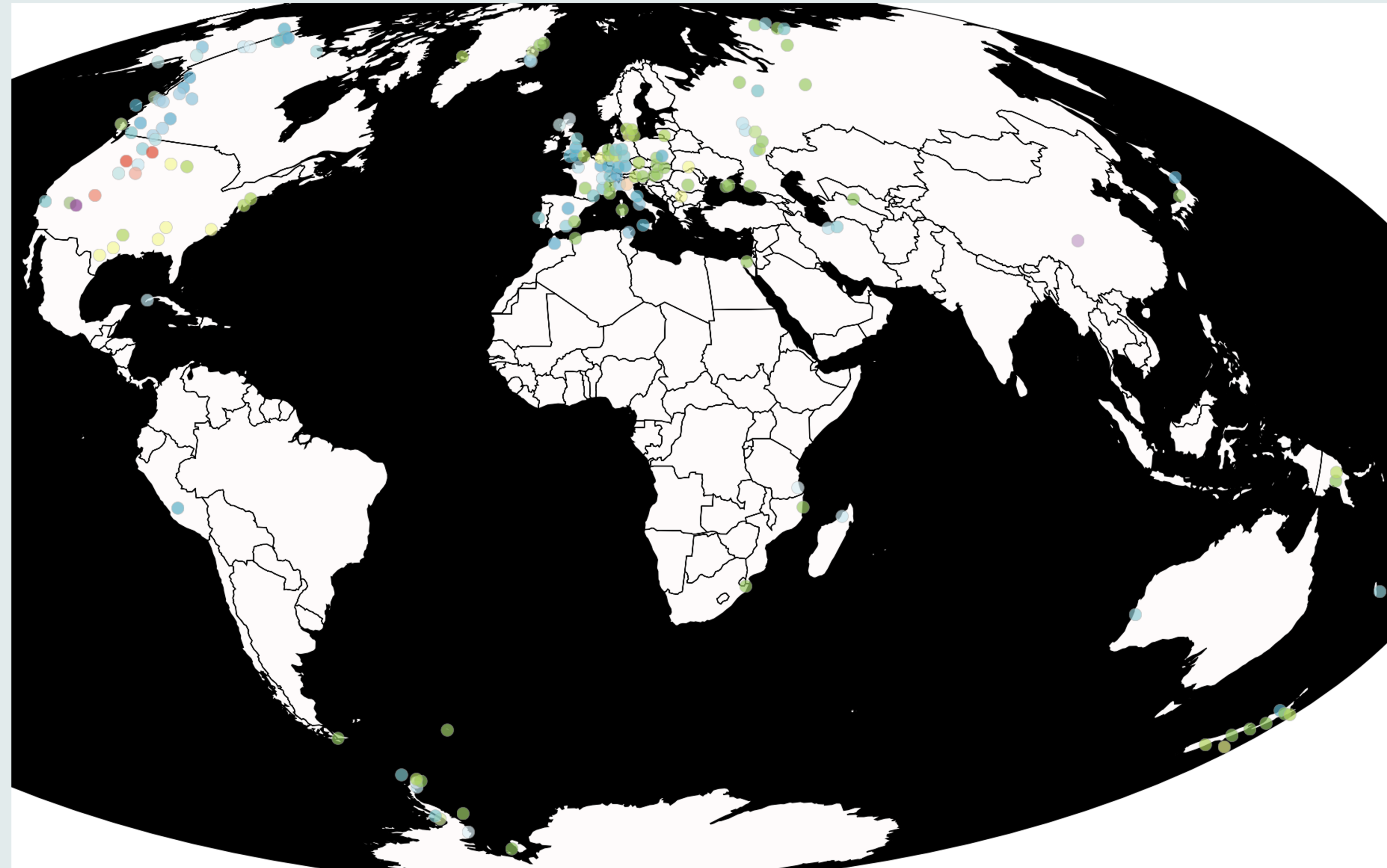
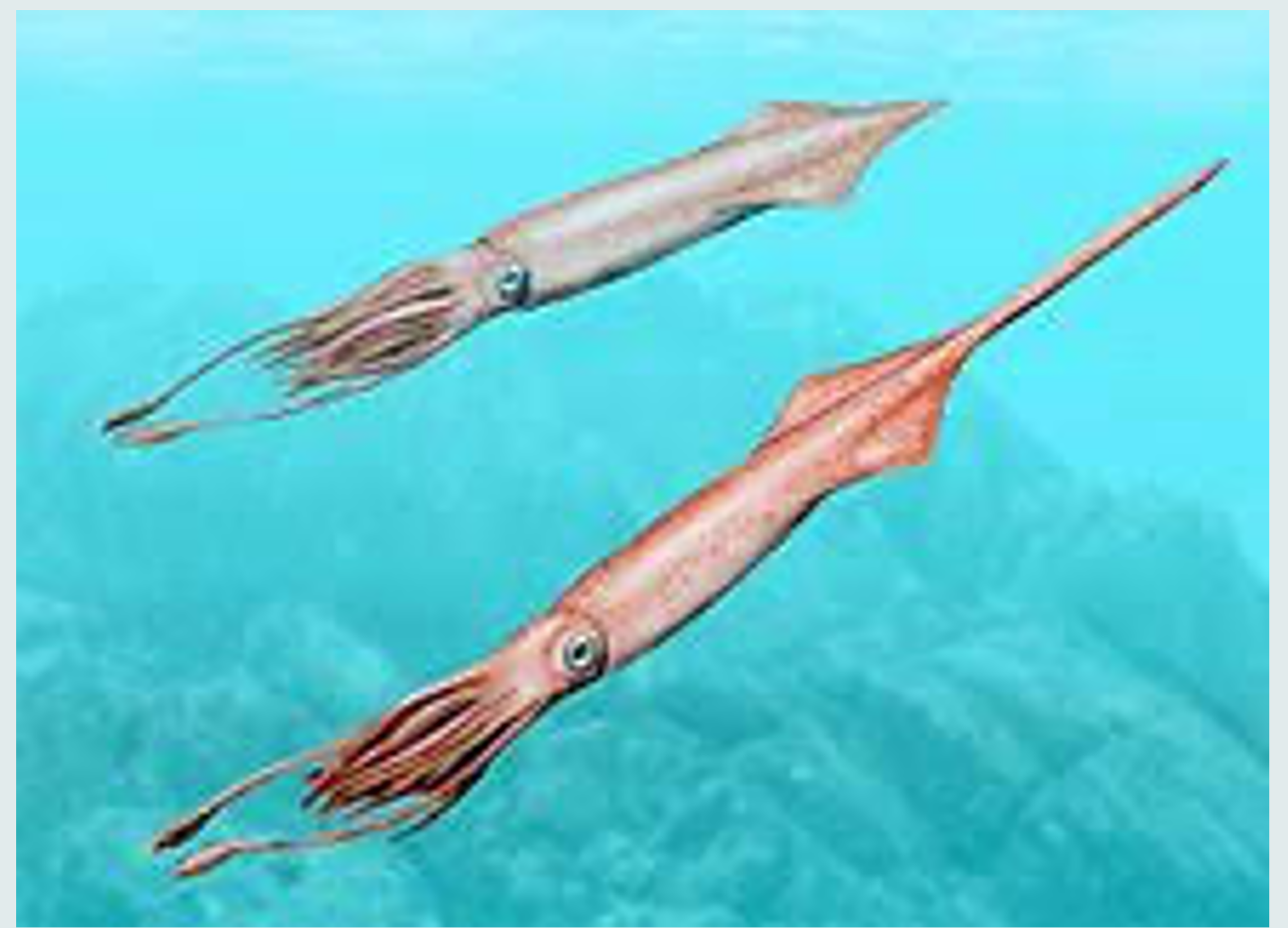


# Belemnitida Display

## Taxon, Mesozoic



F. 7

Map courtesy of the Paleobiology Database Navigator ([paleobiodb.org](http://paleobiodb.org))

### Body

A Belemnite is the central part of the internal skeleton of a squid-like animal (1).

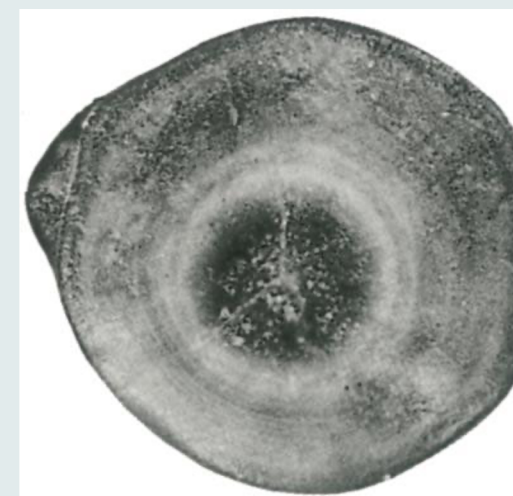


F. 1



F. 2

In this rostrum, there is a cone-shaped cavity, the alveolus (1).



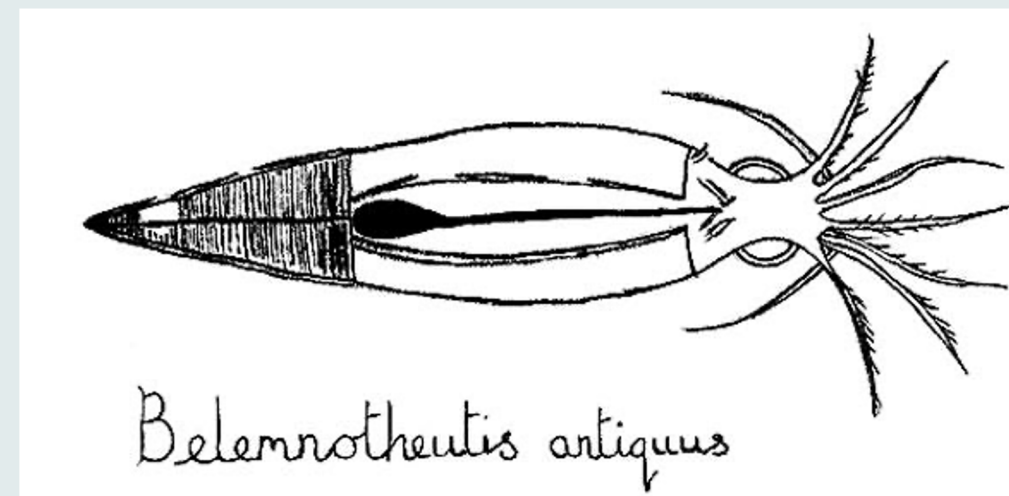
F. 3

Rings represent the growth of the animal, likely over months (3)



F. 4

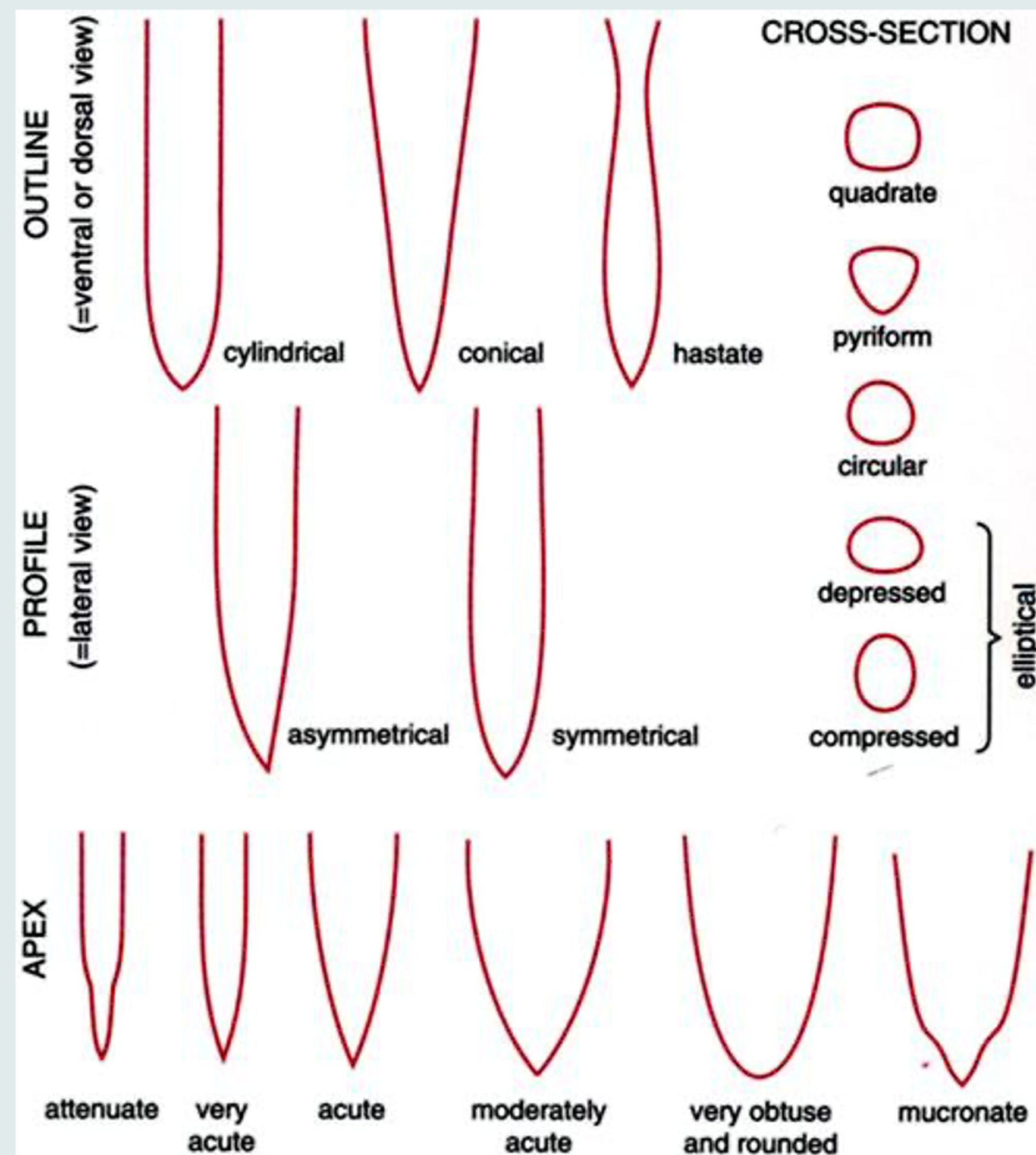
Pictured is chitin arm hooks. Belemnites had ten tentacles, each equipped with 30—50 pairs of hooks (3)



F. 5

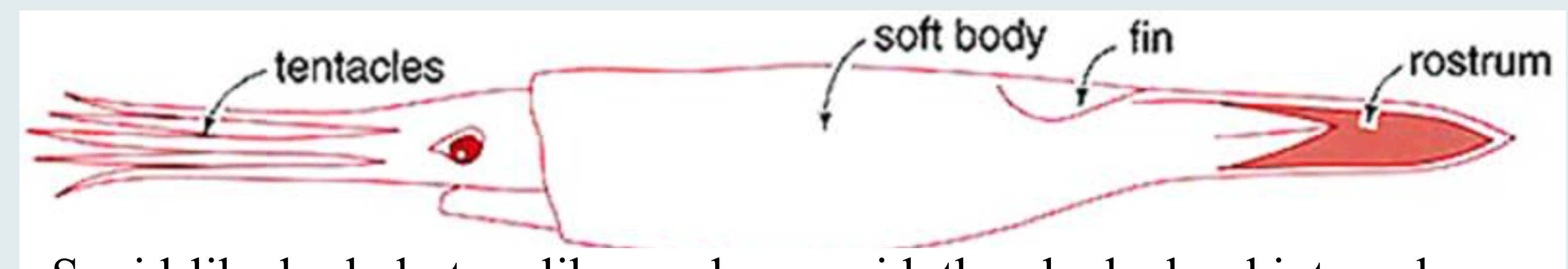
Ink sacs similar to octopus and other cephalopods were found (3)

### Fossil Info



F. 8

This diagram depicts the rostrum morphology from the different species of belemnites. Unlike modern squids, the belemnites have a rostrum which is a hard internal skeleton. (3)



F. 6

Squid-like body but, unlike modern squid, they had a hard internal skeleton (3)