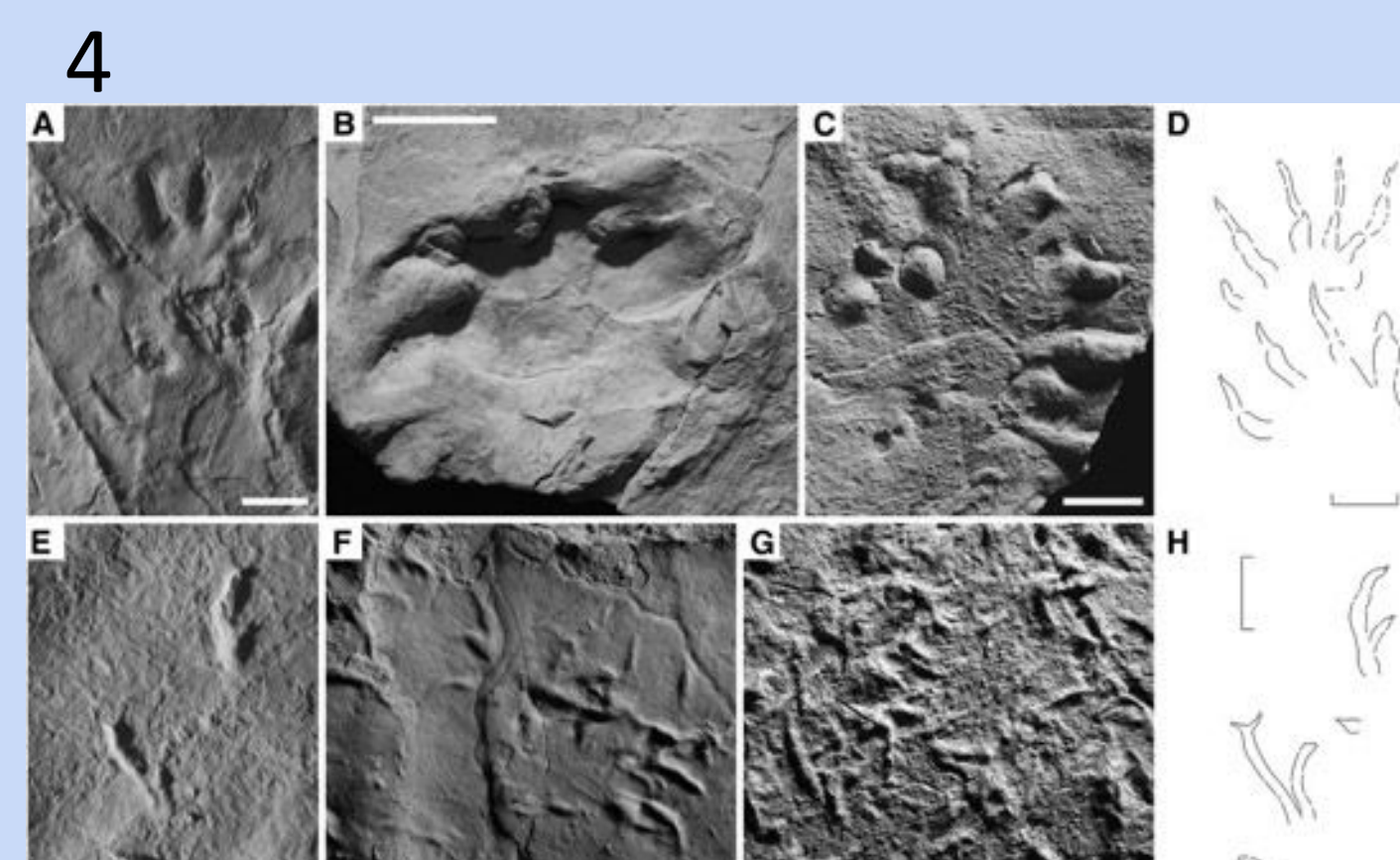
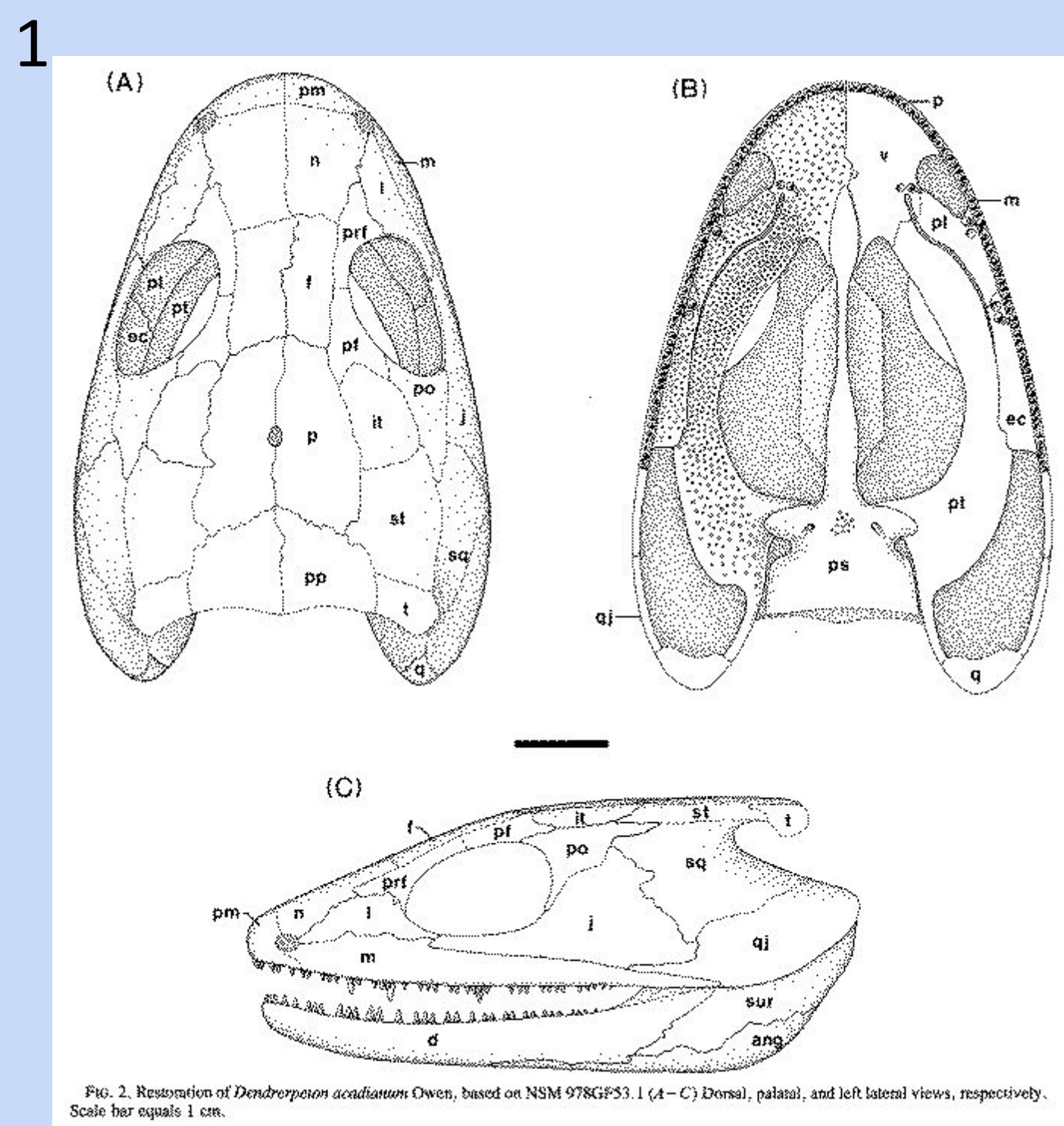


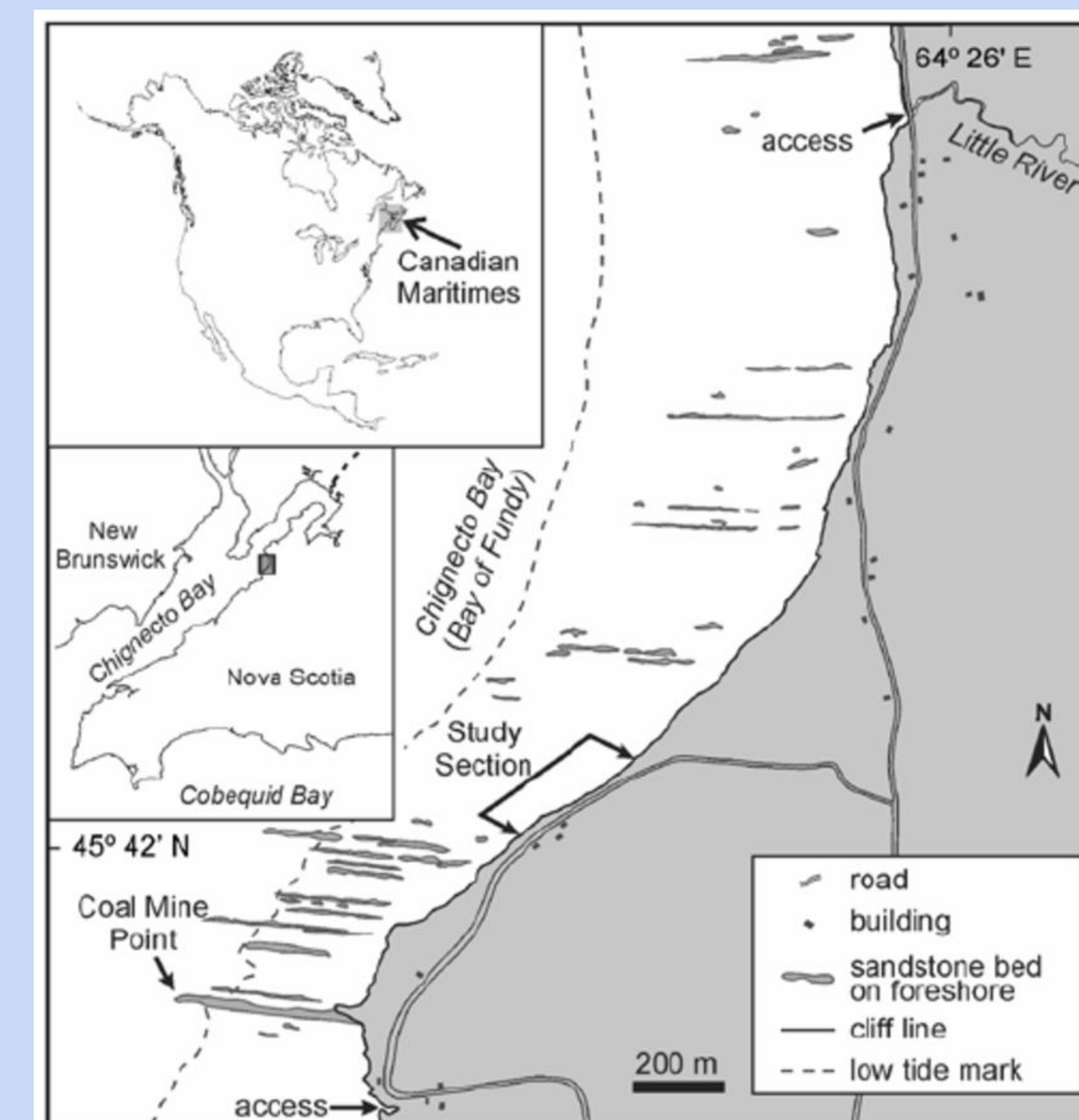
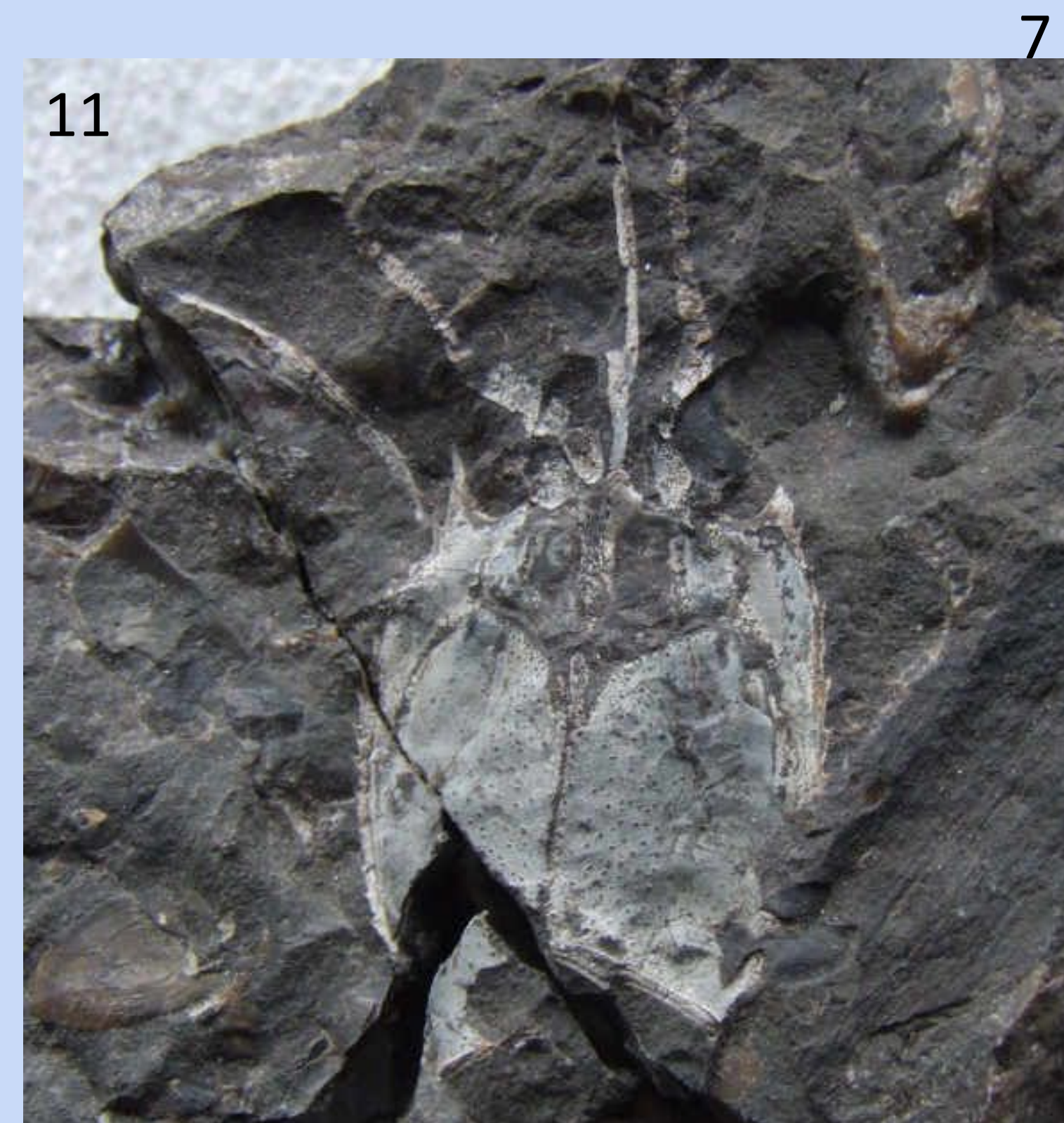
Carboniferous Joggins Fauna

Basal Amphibians/Tetrapods

Joggins Site



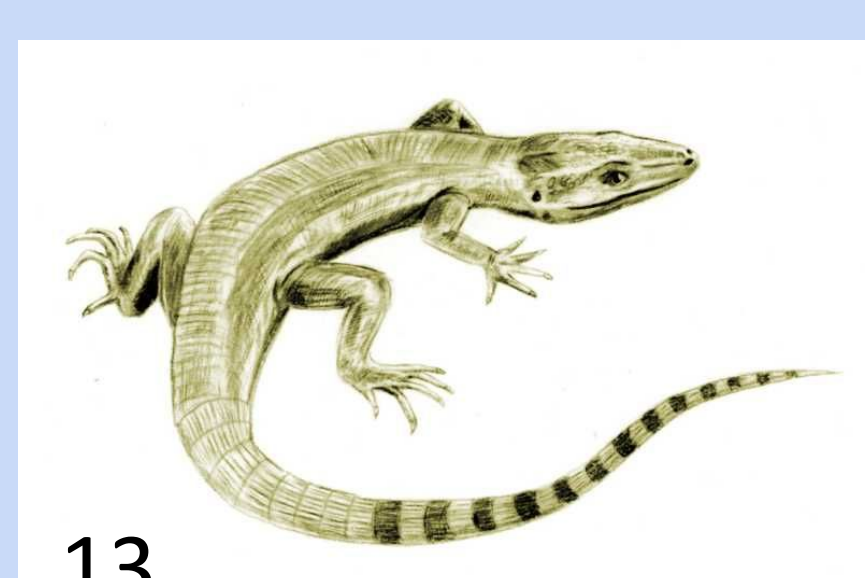
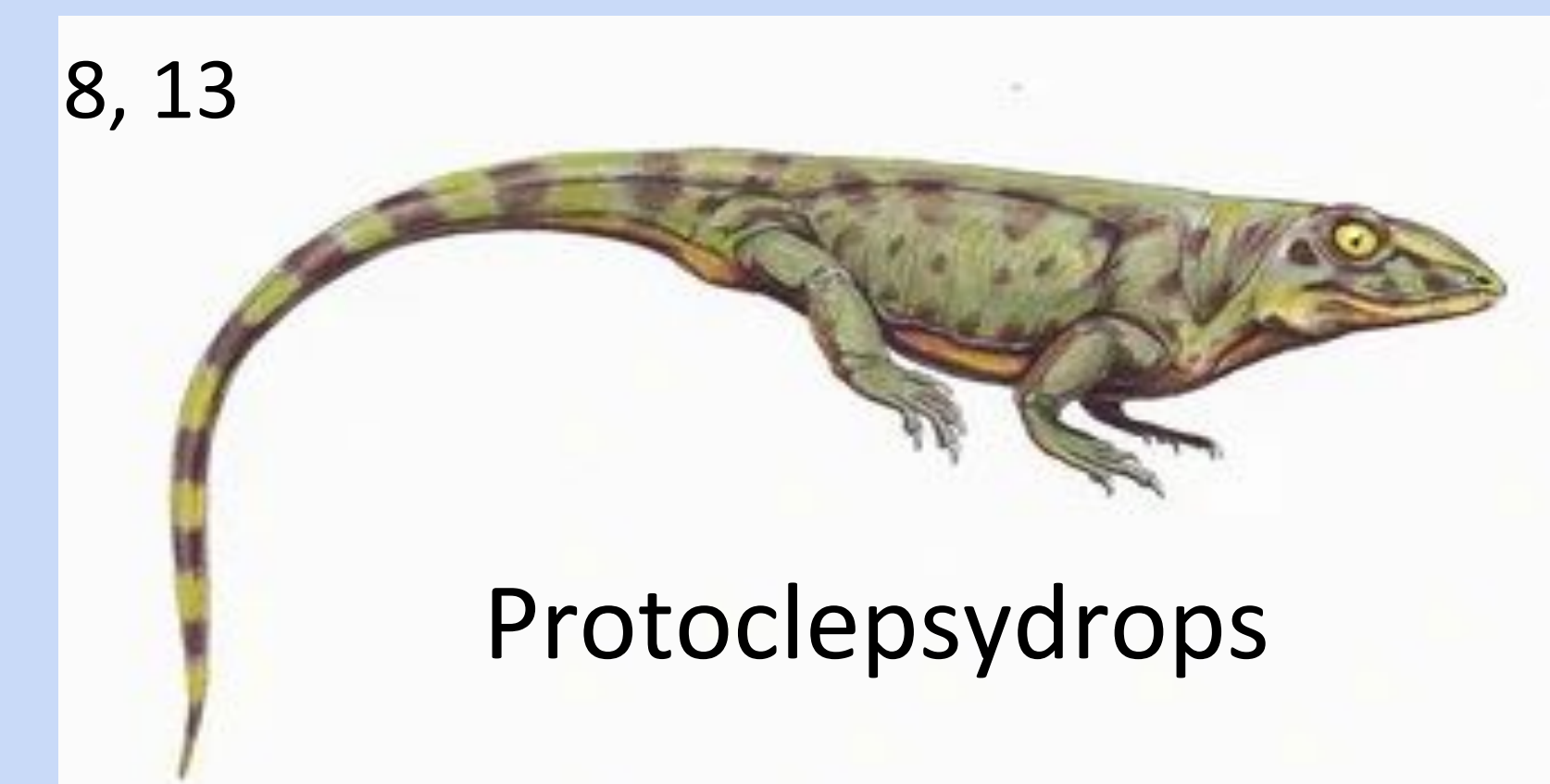
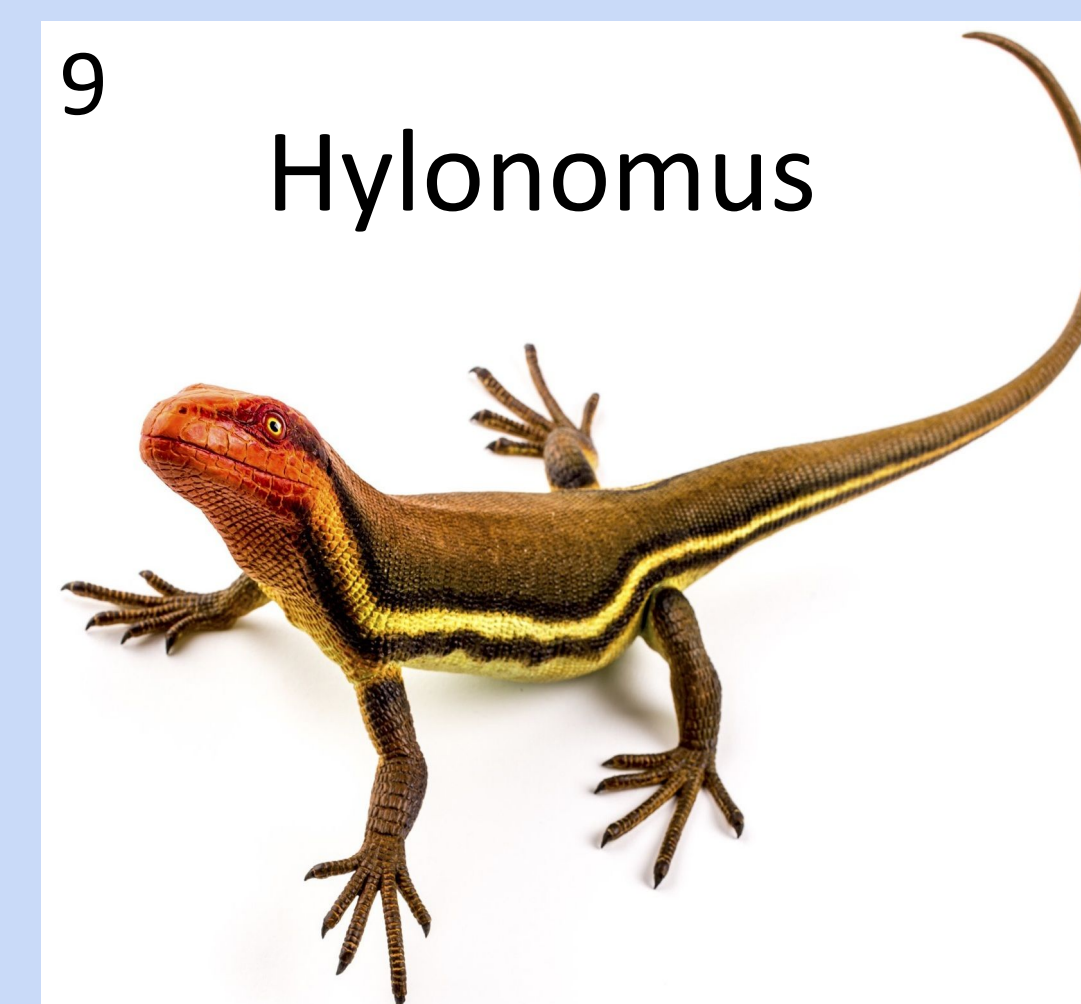
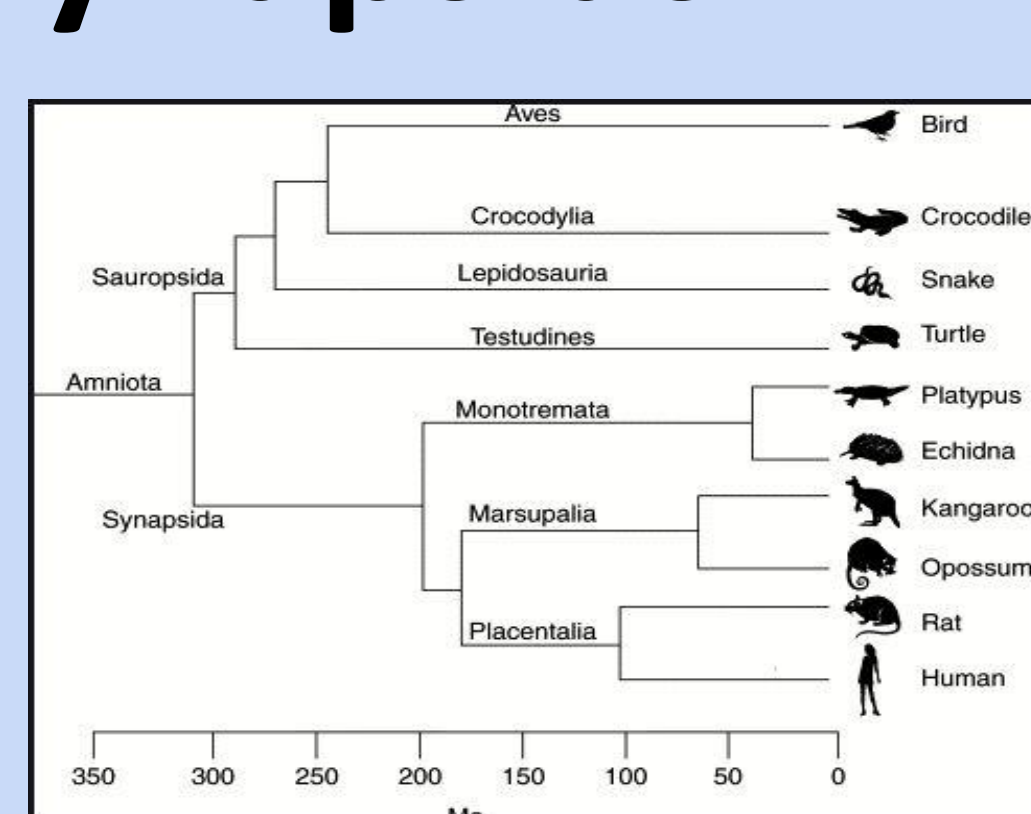
Dendrerpeton (left)
Smallest Amphibian footprints
(above)



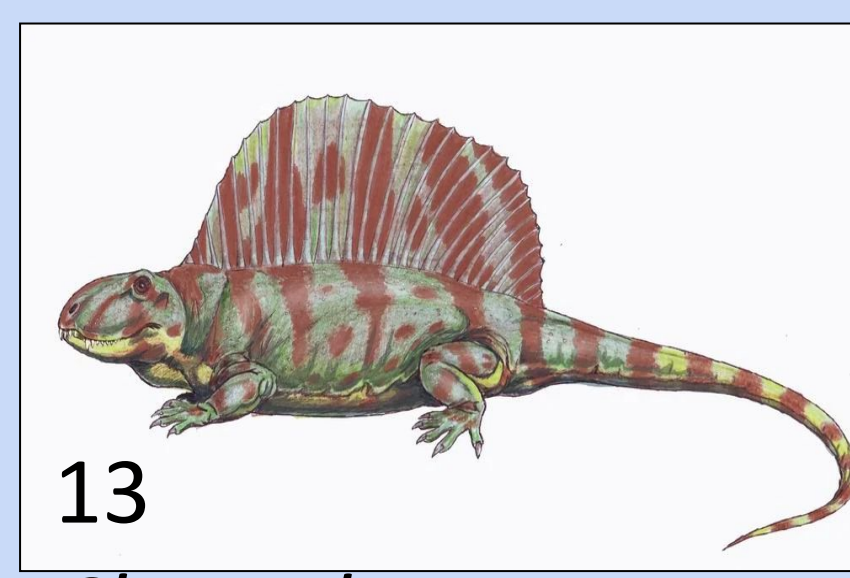
Sauropsids/Synapsids



This is a side-by-side comparison of a paleo-drawing and fossil of *Hylonomus lyelli*.

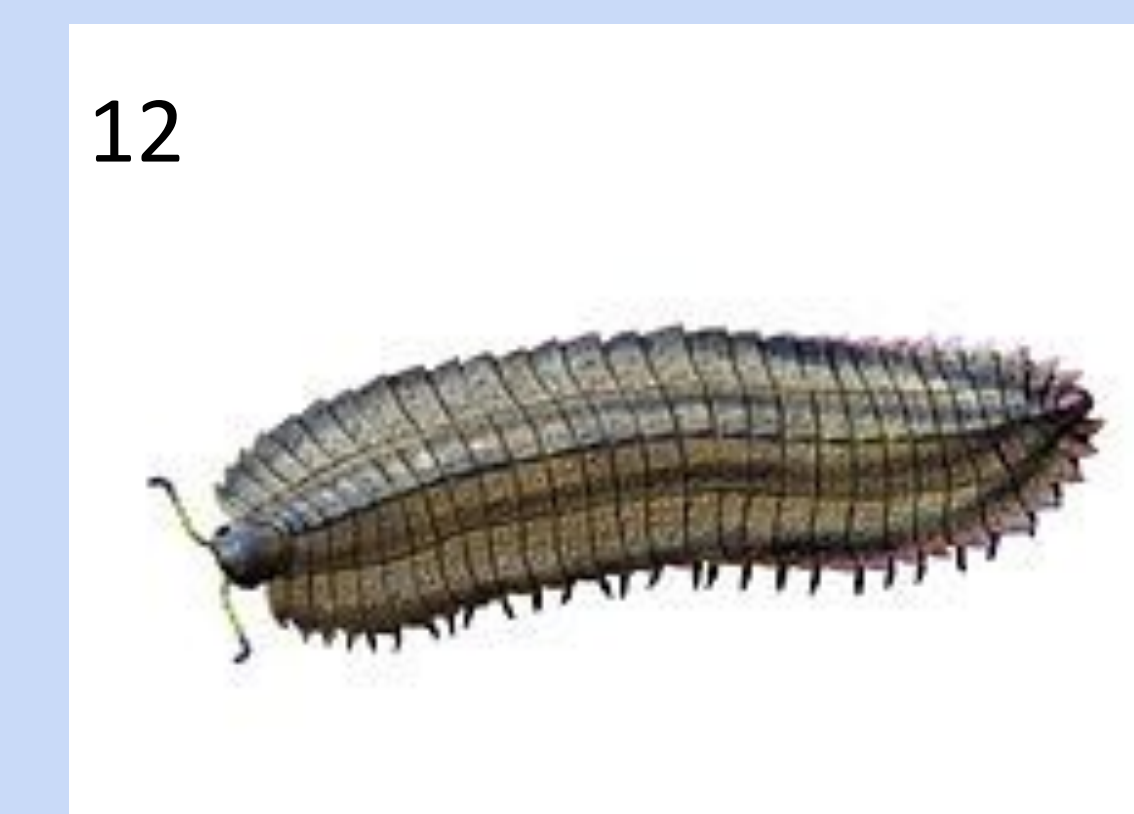


Archaeothyris



Clepsydrops

Giant Arthropods



Arthropleura

Fossilized horseshoe crabs

