

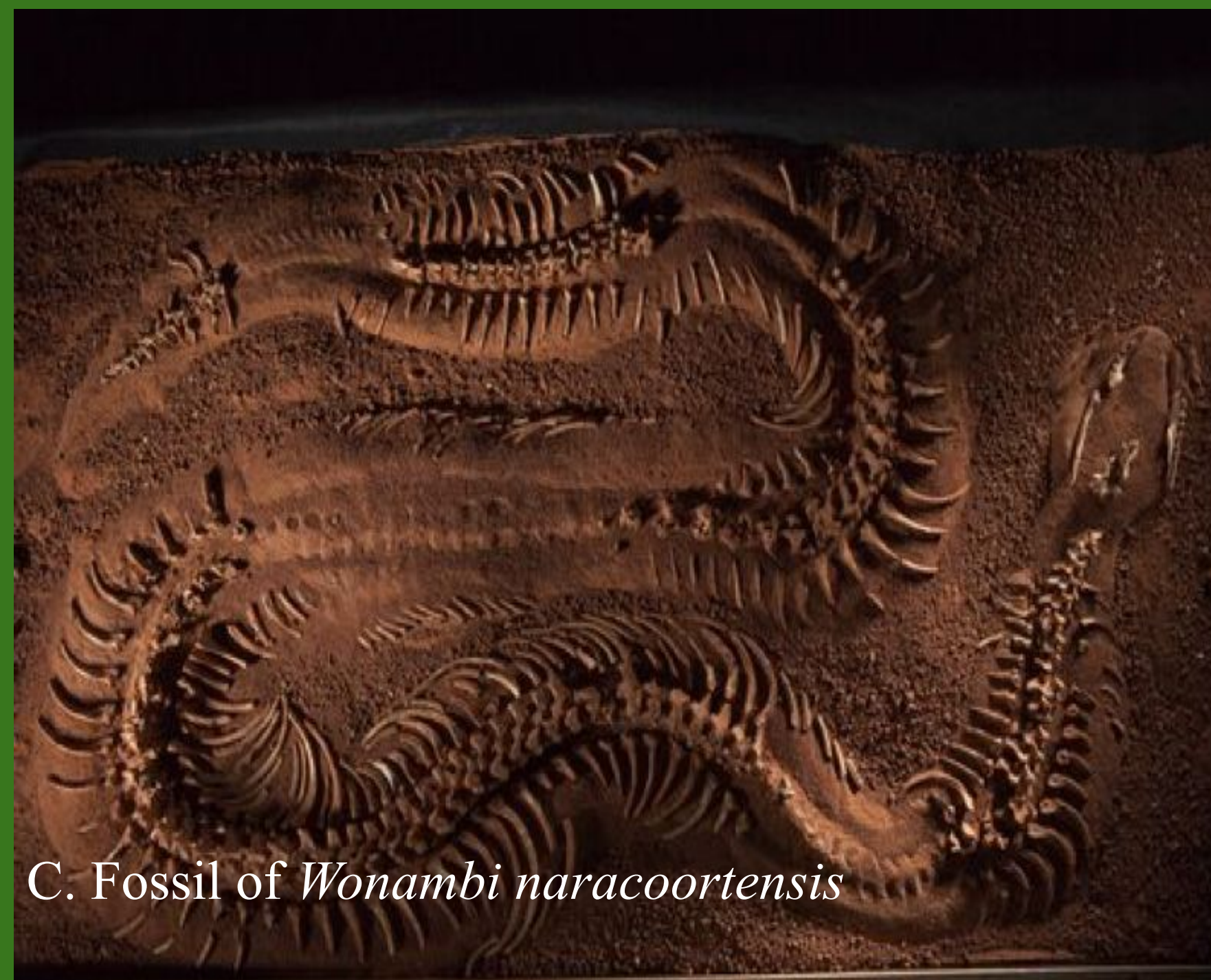
Naracoorte Fossil Site



B. Skeleton of *Sarcophilus harrisii*



G. Modern Visualization of *Procoptodon goliah*

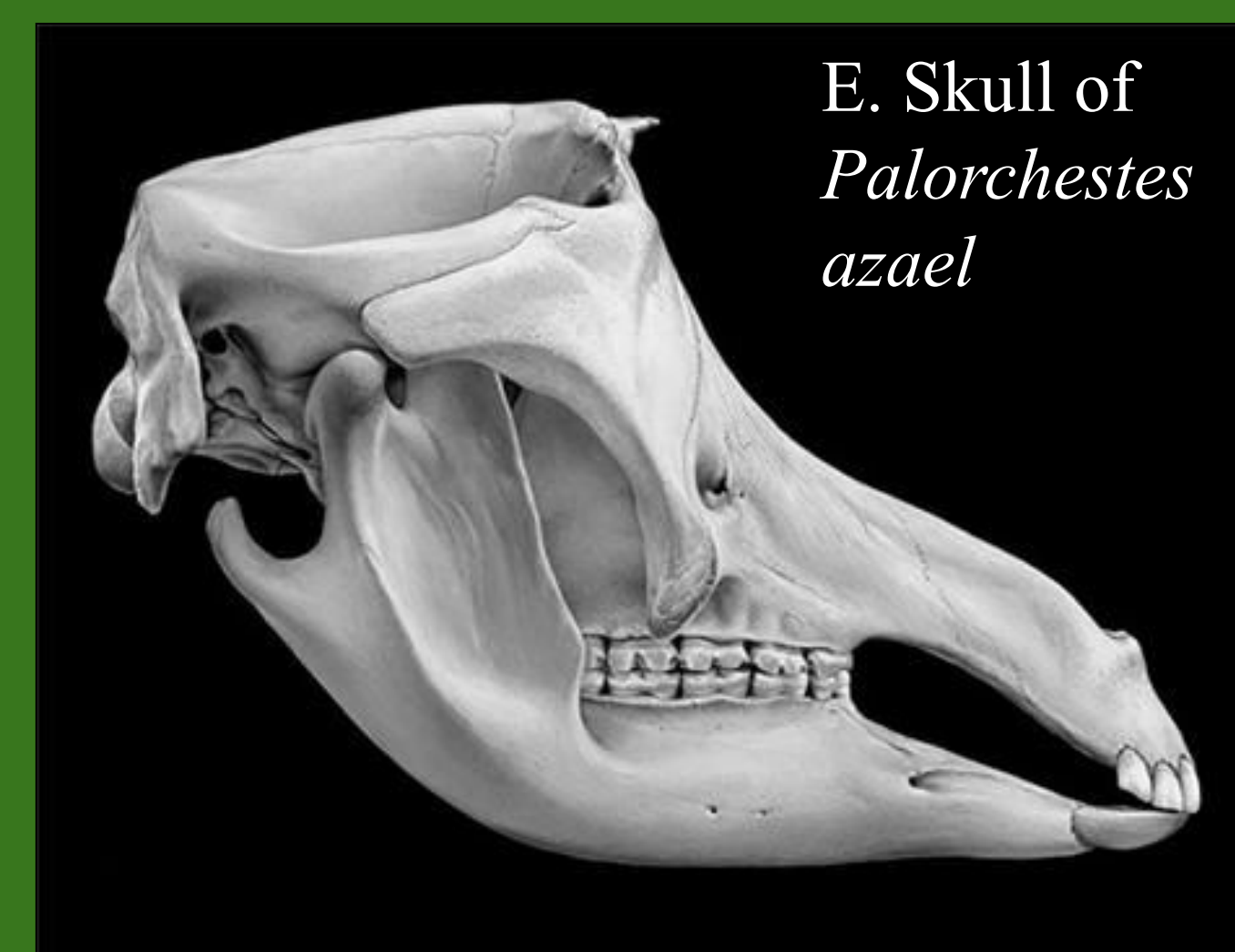


C. Fossil of *Wonambi naracoortensis*

H. Skeleton of *Procoptodon goliah* shown eating



D. Modern visualization of *Palorchestes azael*



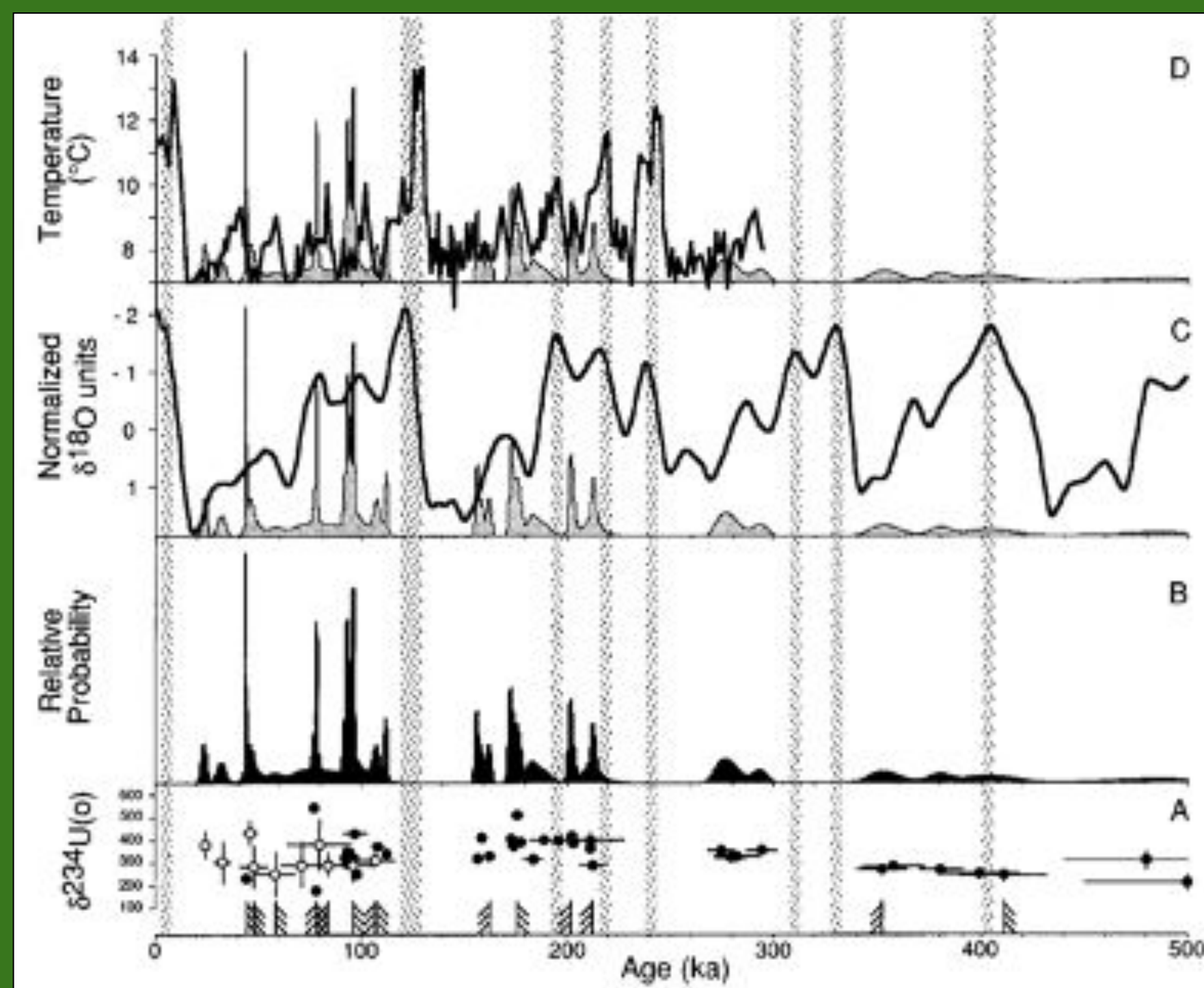
E. Skull of *Palorchestes azael*



Park Map

www.naracoortecaves.sa.gov.au

A. This is a map of the Naracoorte cave park.



I. speleothem ages vs oxygen-isotope curve for marine sediments

The Naracoorte Fossil Site is found in the Naracoorte Caves in the south-east of South Australia. The site was formed by a hole in the surface that led to a cave into which animals fell, forming a pile of fossils and sediments. Because the site was relatively undisturbed nearly 3000 centuries while it accumulated fossils, the oldest specimens are found in the core while the youngest are found near the surface.



F. A photo of visitors at the caves open to the public.